

Identification process of slow learners
and
advanced learners

Process used to identify the Bright and Weak students

The College adopts a well-defined mechanism to identify the Bright, Average and Weak students. The process involved in identification process is shown in Figure 2.2.1.

The College has an independent system for student support and mentoring. For a batch of 15 to 20 students a Faculty member is allotted as a mentor. The mentor guides and motivates the students towards their development and betterment in their academic and non-academic activities such as sports, extracurricular, co-curricular, behavioral and psychological phenomena. The mentors are instrumental in identifying the bright students and slow learners. The performance of the students in Continuous Internal Examination (CIE) and Semester End Examination (SEE) is taken as the major input in identifying the students as bright, average and weak. If the score of the student is less than 50 in one or more courses in CIE/SEE they are considered as weak students. If the score is between 50 and 75 in CIE/SEE they are considered as average students and if the score is above 75 they are considered as bright students.

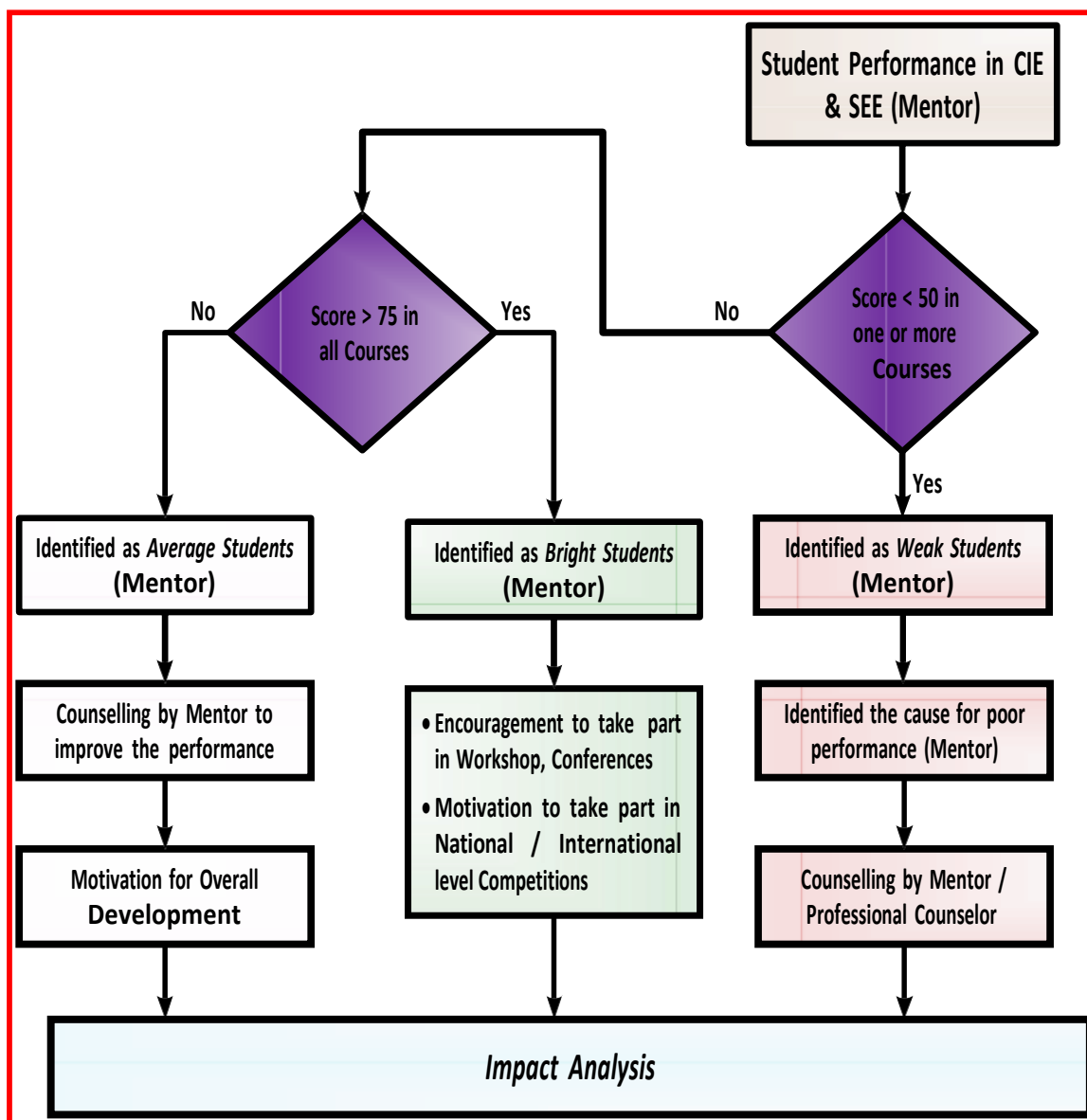


Figure 2.2.1 Process to Identify Bright, Average and Weak students

The bright students are also identified through the following:

- Academic achievements in curricular activities
- Active participation in regular theory and practical classes
- Participation and winning prizes in co-curricular and extracurricular activities conducted inside and outside the college.
- Organizing and conducting events through the Departments
- Proposing innovative ideas in assignment preparations and project contests

Encouraging Bright students

The advanced learners are encouraged through the following initiatives:

- To participate in more number of paper presentations, symposiums, conferences, mini-project exhibitions, Innovative Project Contest and My Innovative Business Plan competition.
- Guided to get internship training with leading companies.
- Involved in consultancy and R&D work undertaken by the departments.
- Facilitated by providing more number of value added courses, certificate courses by national and International agencies.
- Motivated to take up competitive exams like GATE, GRE and TOEFL.
- Facilitated to borrow more number of books from Central and Department Libraries.
- Self-learning courses are provided for advanced learners and the digital library is provided with NPTEL and MIT courseware.
- Advanced learners are given Merit awards by the Management to encourage them in their studies.

Assisting Weak Students

The Department follows a systematic procedure to identify the weak students.

- Slow learners are identified mainly through their performance in Periodical Tests and End Semester Examinations.
- They are counseled by the mentor and the Head of the Department on need basis.
- Students having personal or psychological problems are counseled by the external Professional counselor of the college.
- Special Coaching classes are handled by the faculty to improve the performance of slow learners where the students can interact comfortably with the faculty to clarify their doubts.
- After identifying the slow learners, the concerned class advisors meet the students individually to know their problems in order to take remedial measures.
- Students also have the provision for working in the laboratories after regular working hours.

- Question Bank, Tutorial Questions, course material and previous year Semester End Examination question papers are provided to the slow learners for easylearning.